

# MAC FAUCETS

## Owner's Manual

Models: FA43/FA444

### Installation procedure:

1. **Take a moment to view drawings and read “special Installation note” on page 3 of this manual before proceeding with installation. Connect Faucet Automator models FA43/FA444 exactly as shown in drawing, with sensor cable connection at bottom. Failure to install Faucet Automator Models FA43/FA444 as shown will result in premature product failure and will void all warranties including extended warranty.**
2. If using deck plate, affix plate on deck to faucet using supplied screws (most models). Install new faucet by placing sensor wire and hose (faucets with integral hose) through the hole designated for spout. Make sure that wire is not pinched or cut during installation. **Cutting or severely crimping sensor wire will cause faucet to malfunction and will also void all warranties.**
3. **Faucets with integral hose go to step 5.** Slide retainer washer over faucet shank with set screw deep placed in shank groove. Insert sensor wire through special groove in washer. Install retainer nut over faucet shank and tighten.
4. Remove the stainless steel braided hose from package, fasten to faucet shank. **Go to step 6.**
5. Place rubber ring (if used) at the bottom of the faucet. Affix faucet above plate (if deck plate is used). Use 2 screws, 2 nuts, and 1 retainer washer to fasten faucet to deck.
6. Locate spot on the wall that you feel comfortable installing Faucet Automator FA43/FA444. The spot selected should be within reach of braided hose and sensor wire. The selected spot should also be away from possible water contamination.
7. Mount Faucet Automator FA43/FA444 using supplied fasteners. **Be careful to mount box exactly as shown in drawings with sensor receptacle towards the bottom.**
8. Install shank hose to Faucet Automator's water outlet (top).
9. Align groove in sensor wire plug with pin in Faucet Automator FA43/FA444 sensor receptacle, insert plug into receptacle, fasten plug nut by hand only. **DO NOT CROSS THREAD.**

**Before proceeding to step 9, purge both hot and cold water lines for at least a minute each at high volume. Purging water lines clears out dirt and debris that would otherwise find its way to screen filter within the solenoid valve.**

10. \*\*\*For single water source system install **cold water** supply hose to Faucet Automator's water inlet, **absolutely do not substitute hot water for cold as this may lead to scalding injuries.**
11. \*\*\*For dual water temp system install **Optional** mixing valve to Faucet Automator's water inlet. **MAC Faucets makes 2 types of optional mixing valves, an above the sink mechanical valve and a below the sink mechanical valve. For thermostatic type valve, please consult your plumbing professional.**
12. Install hot and cold water to mixing valve in no particular order.
13. Turn angle stops on. Check for leaks.

### Operation:

1. Place hands under spout and directly in front of neck mounted sensor, water will begin to flow out in less than a second, water flow rate is governed by aerator and supply pressure, water temperature is governed by selection at angle stops, as well as water temperature in supply pipes. **PLEASE REMEMBER, AUTOMATIC FAUCETS EMPLOY “PRESENCE” NOT “MOTION” SENSORS. AN IDLE OBJECT PLACED DIRECTLY UNDERNEATH SPOUT WILL IMMEDIATELY ACTIVATE FAUCET.**
2. Remove hands and water will cease to flow within 1-3 seconds depending on model of faucet and on water pressure.
3. If hands are left underneath spout for 30 or 60 seconds (depending on model), water will automatically shut off. To initiate flow again move hands away from faucet and start at step 1.
4. When attempting to run water over small objects such as tooth brush, it may be necessary to bring object closer to sensor to initiate water flow, when water begins to flow, move object back under stream of water. Once user “gets the feel” of the faucet this step may be skipped.

## Battery Replacement Instructions:

Batteries should provide 12 to 24 months of reliable service depending on the make of battery used and the frequency of usage among other factors. Battery weakness is indicated by constantly flashing led light within the sensor capsule, *some models might not have this added feature*. When replacing batteries please follow these simple steps:

1. FA43 Faucet Automator: unfasten the 4 Phillips screws that dot the 4 corners.  
FA444 Faucet Automator: unfasten four Phillips screws that dot the inner square, then proceed to step 4).
2. Hold both water fittings down and carefully remove enclosure cover (**FA43 Only**).
3. Pull black battery holder out of box, and unfasten 4 Phillips screws. **Be careful not to damage wire (FA43 Only)**.
4. Replace batteries with **4 AA Duracell Copper Top** batteries only. Make sure that replacement batteries are all new DO NOT use old batteries. Place batteries in their proper place and position.
5. (**FA43 Only**) Reassemble black battery holder, and refasten 4 Phillips screws.
6. (**FA43 Only**) Re-install battery pack into the Faucet Automator.
7. Test faucet prior to placing enclosure cover back on.
8. Place enclosure cover back on. Fasten 4 Phillips screws.

## Trouble Shooting: *(Always make sure that sensor lens is clean and Duracell Copper Top batteries are fresh)*

*Faucet does not operate, red light does not in response to approaching objects:*

1. Hands are not placed properly under spout and in line with sensor.
2. Batteries need replacing. See battery replacement instructions.
3. Batteries installed improperly in battery pack, battery harness not plugged in properly, see installation instruction, and battery replacement instructions.
4. Sensor wire loose, unplugged, plugged improperly, plug sensor wire properly. Please call MAC Faucets for instructions.
5. Sink is raised above counter and blocking “sensor’s vision”, reinstall properly.

*Faucet does not operate, red light blinks in response to approaching objects:*

1. No water, very low water pressure in supply pipes, supply valves closed.
2. Water pressure very high, well above 115 PSI.
3. Screen filter severely clogged up.
4. Supply hoses severely kinked.
5. Batteries low or defective, replace batteries.

*Faucet operates on and off “by it self”:*

1. Sensor range adjusted too long, and must be adjusted for shorter range. Please call MAC Faucets for instructions.
2. Objects (such as sink lip) may be present in close proximity to sensor.
3. (Rare) Severe transient infrared signal present in the environment, probably caused by a defective neon light.

*Faucet leaks, drips:*

Constant leaks or drips indicate defective solenoid valve, send Faucet Automator for repair or contact an authorized plumbing professional.

*Loud thump noise when faucet turns on and off.*

This is an issue commonly associated with diaphragm type valves such as washing machine valves, dishwasher valves, etc. The noise is generally present in the piping system. Clear winner remedies are to:

1. Lower water flow rate (see flow rate adjustment section of this manual).
2. Install “hammer arrestors” in close proximity to your automatic faucet. Please consult a plumbing professional for this task.
3. Problem may be caused by defective angle stop. Replace angle stop.

*Faucet continues to run for 30 or 60 seconds after hands are removes:*

This very rare condition generally occurs due to over sensitivity on the part of the sensor, system water pressure well above 100psi, and/or bathroom lighting setting. This condition is always field curable.

1. Turn down water flow rate.
2. Replace aerator with 0.5GPM aerator (when possible).
3. Adjust sensor range to “shorter”. Please call MAC Faucets for instructions.

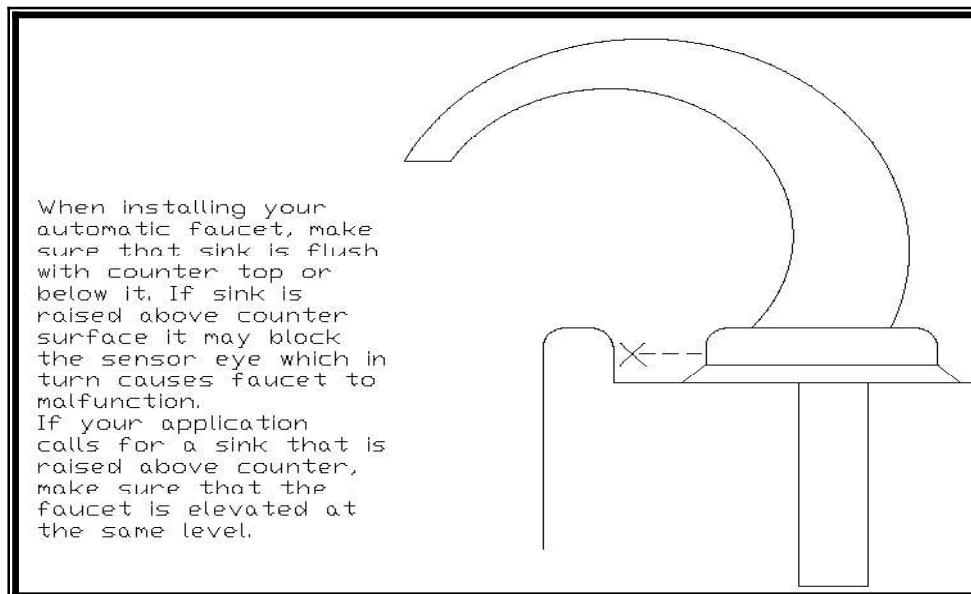
*Runaway faucet, water runs out of faucet continuously, longer than 1 minute, does not stop.*

1. Make sure batteries are installed properly, if A.C., make sure that power is present at wall receptacle.
2. Make sure Faucet Automator is properly oriented on the wall, see drawings below.
3. Make sure that sensor wire from faucet is plugged into Faucet Automator.
4. Make sure that sensor wire is not cut or broken specially near mounting nut and washer immediately below deck.
5. Make sure that water is plumbed correctly into Faucet Automator, Water in to “inlet”, water out from “Outlet” see Drawings.
6. If items 1 to 5 are OK, please contact Factory for more tips on your particular installation.

## Special Installation Note

Automatic faucets are design to perform properly in a variety of applications. There are some conditions, however, that may adversely impact the faucet’s ability to perform. Please note the following conditions prior to installing you new faucet:

1. Your automatic faucet is designed for indoor applications. This faucet is not designed for outdoor applications.
2. Avoid installing your new faucet in direct sunlight. Direct sunlight that is focused on sensor will temporarily disable faucet’s sensing capabilities.
3. If you choose to install your faucet to one water source only, **do not install to hot water only** as this may result in scalding injury.
4. **Important:** Before connecting supply line to Faucet Automator, purge both hot and cold water lines for at least one minute each at high volume. Purging water lines clears out dirt and debris that would otherwise find its way to screen filter within the solenoid valve.
5. **Important:** Avoid using pipe putty on water connection to faucet. Pipe putty may cause immediate and irreversible damage to solenoid valve. Please use Teflon tape instead.
6. **Important:** If you do not plan on using faucet immediately after installation (within 90 days of installation), disconnect water supply lines to faucet and unload the water pressure that may be present in faucet. This will keep new solenoid valve components from bonding together under high pressure.



### MAC FAUCETS

13105 Crenshaw Blvd

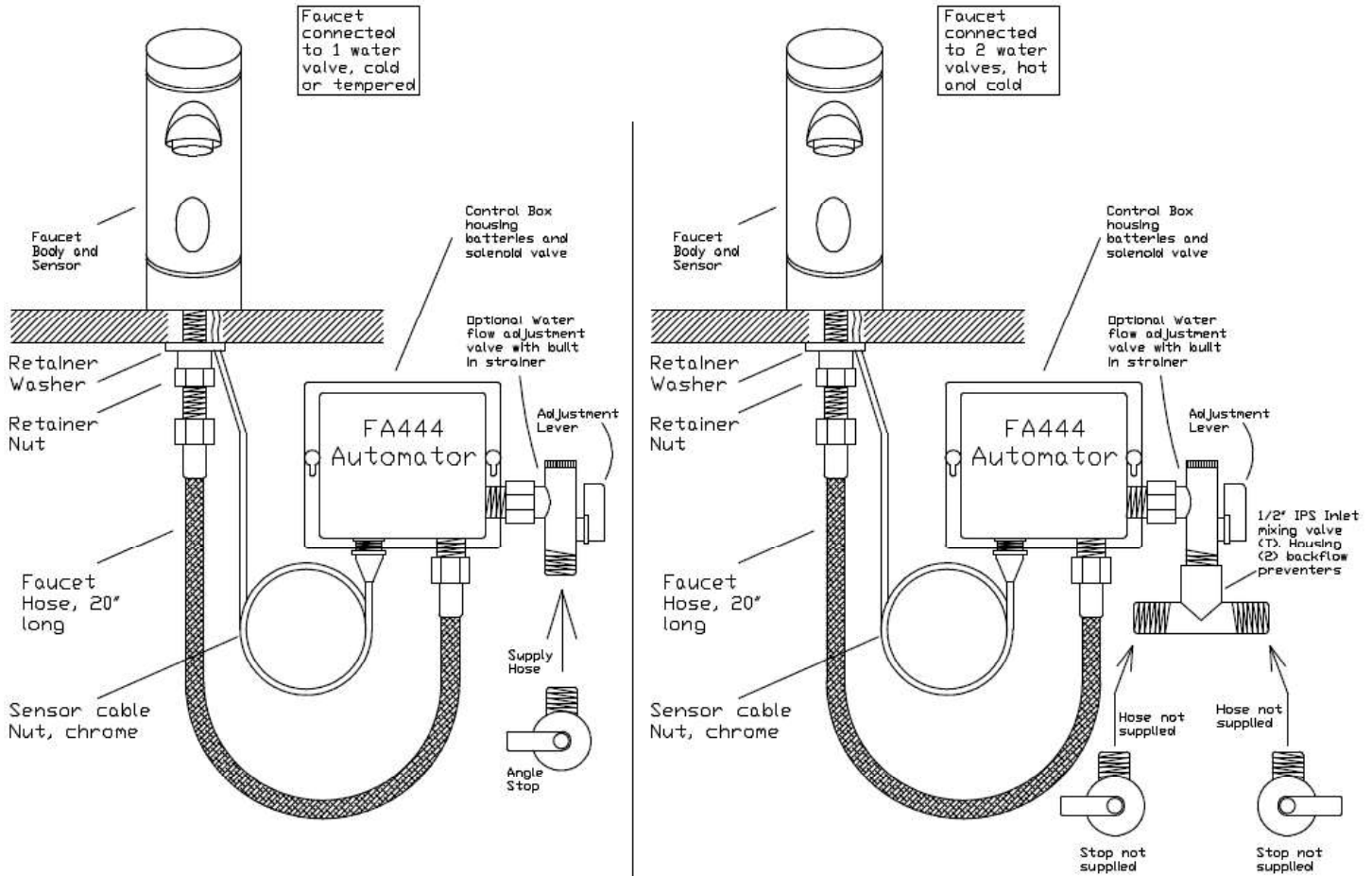
Hawthorne, CA 90250

Tel 310-973-9700 – Fax 310.919.3073

[www.macfaucets.com](http://www.macfaucets.com)

# MAC FAUCETS

## Installation Drawings



### LIMITED WARRANTY

MAC FAUCETS WARRANT THIS FAUCET TO BE FREE OF DEFECTS FOR A PERIOD OF ONE YEAR FROM DATE OF PURCHASE. MAC FAUCETS WILL REPLACE, FREE OF CHARGE, DURING THIS WARRANTY PERIOD, PARTS THAT PROVE DEFECTIVE WHEN PROPERLY INSTALLED AND UNDER NORMAL USE AND SERVICE. DAMAGE THAT OCCURS AS A RESULT OF ABUSE, IMPROPER INSTALLATION, ENVIRONMENTAL CONDITIONS, OR IMPROPER APPLICATION WILL VOID THIS WARRANTY. DEFECTIVE PRODUCTS MUST BE SHIPPED WITH POSTAGE AND HANDLING PREPAID, ALONG WITH DATED PROOF OF PURCHASE. **THIS WARRANTY DOES NOT COVER INSTALLATION OR ANY OTHER LABOR CHARGES. IT DOES NOT COVER SHIPPING AND HANDLING OF BOTH REPLACEMENT PARTS AND RETURNED DEFECTIVE PARTS.**

PRODUCTS OR COMPONENTS THAT HAVE BEEN ALTERED OR IN ANY WAY MODIFIED WILL NOT BE COVERED UNDER THIS WARRANTY. REPLACEMENT PARTS ARE UNDER WARRANTY ONLY FOR THE REMAINING PERIOD UNDER THE INITIAL WARRANTY. SOME STATES DO NOT ALLOW FOR EXCLUSION OF INCIDENTAL OR CONSEQUENTIAL DAMAGE.



# MAC FAUCETS, LLC

## Electronic Soap Dispensers

### ALL PYOS INSTALLATION MANUAL



**For All**  
PYOS SOAP  
DISPENSERS

☎ 866 558 3200    ✉ [info@macfaucets.com](mailto:info@macfaucets.com)

[www.macfaucets.com](http://www.macfaucets.com)

# MAC FAUCETS, LLC

## Mounting Methods

There are 2 options available for mounting pump housing (gray plastic enclosure):

**Spout Mount Method:** Pump housing is mounted onto the spout shank. See below left.

**Wall Mount Method:** Pump housing is mounted to a bracket which is affixed to the wall. See below right.

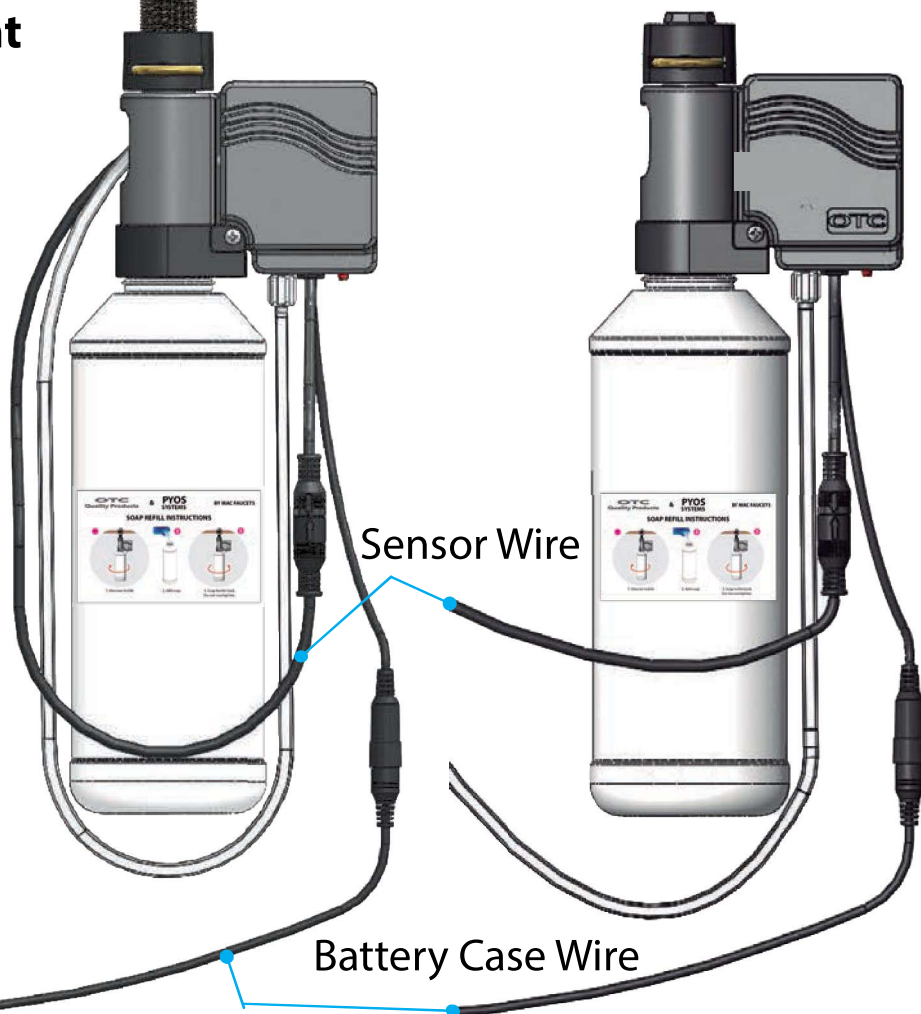


**Model PYOS-17**  
Standard 4" reach



**Spout Mount Method**

**Wall Mount Method**



Sensor Wire

Battery Case Wire

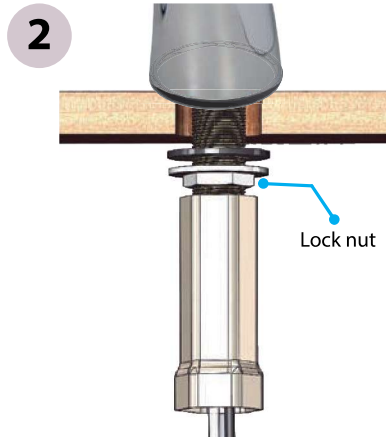
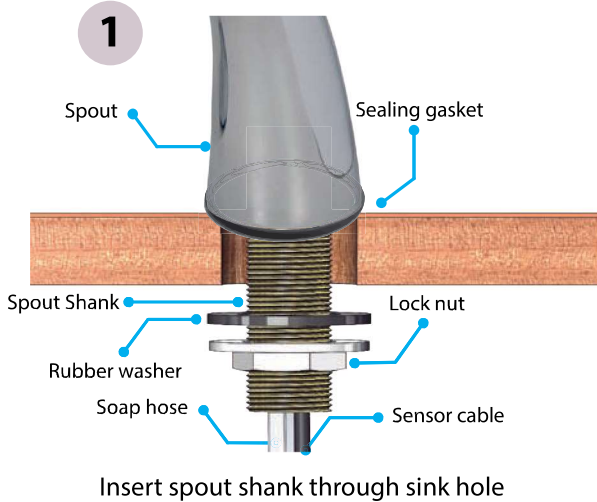
## Tools Needed





## Deck Mounting Installation

**Before proceeding, refer to Page 2 for mounting methods, and to page 4 for proper installation of soap dispenser relative to faucet.**

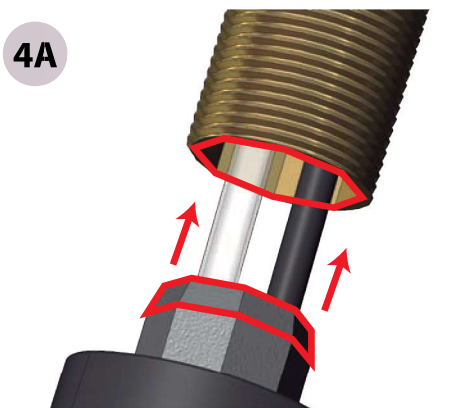


Use proper tool to tighten lock nut  
Careful not to damage hose & cable  
*Installations using 1 gallon soap container, please proceed to page 7.*

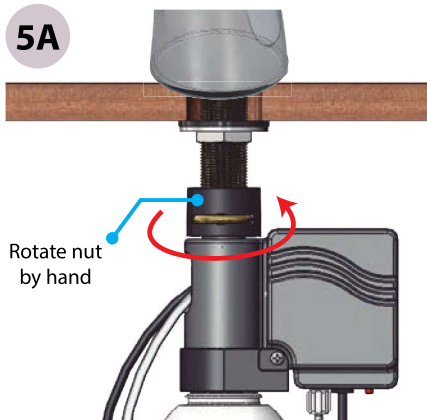
**Spout Mount Method. See page 2**



Insert sensor cable **FIRST** then hose into tubular part of pump housing

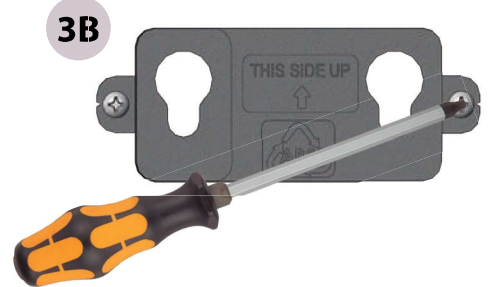


Align octagon detail of pump housing with octagon ID detail of shank and push

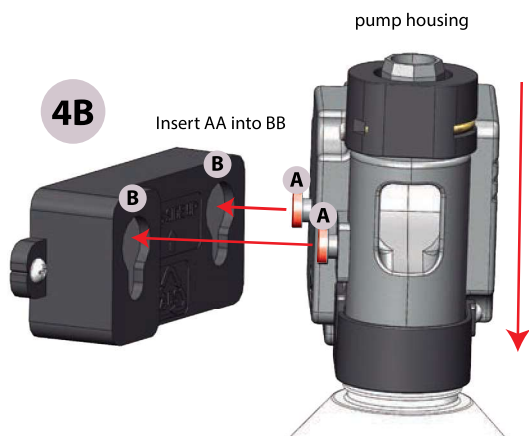


Fasten pump housing onto spout shank by rotating plastic nut by hand only. Do not overtighten  
**Skip steps 3B and 4B, go directly to 6 & 7**

**Wall Mount Method. See page 2.**



Mount wall bracket onto wall in a level horizontal position. Follow arrows showing UP side.



Install pump housing onto wall bracket (insert AA into BB and push enclosure down).

### Instructions 6 & 7 below for battery powered units only.

*For AC powered units, skip 6 & 7. Go directly to page 5, step 8*

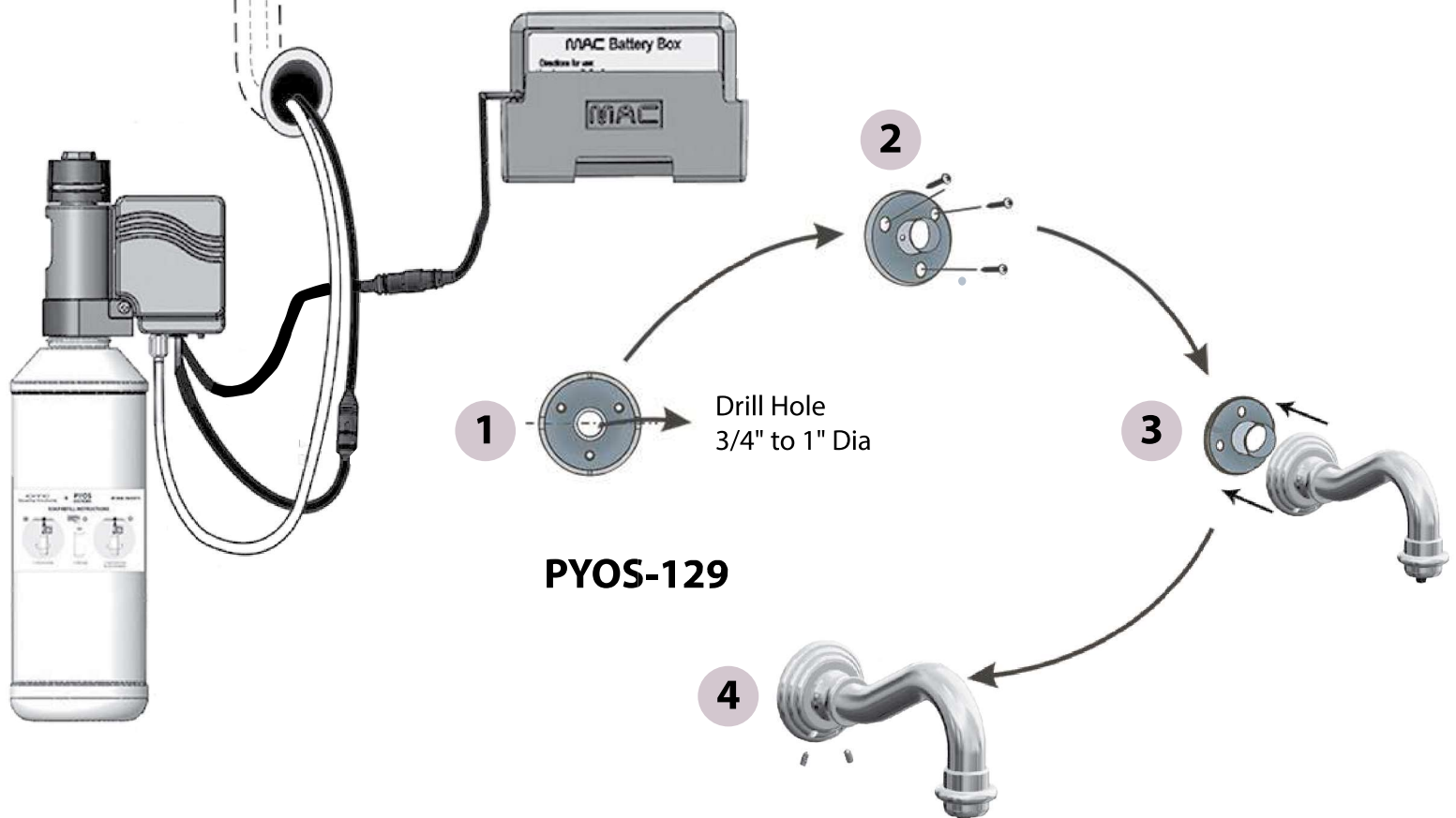
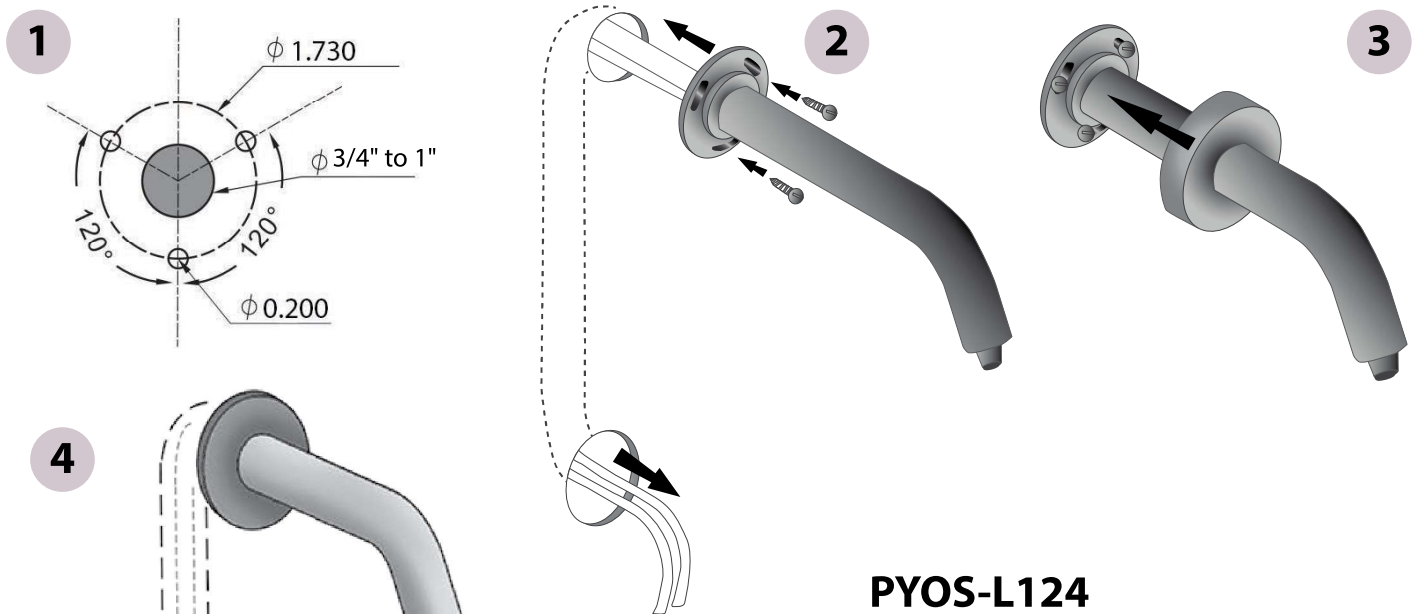


Install Battery case holder onto wall in a level horizontal position.



Place battery case inside of battery holder so that case label is legible

## PYOS wall mounted soap dispensers





8



OPTIONAL: 110V AC Power supply

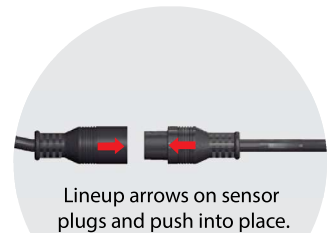
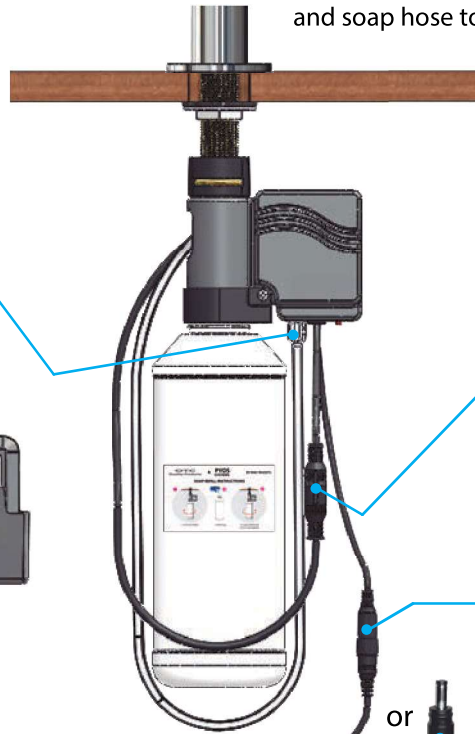
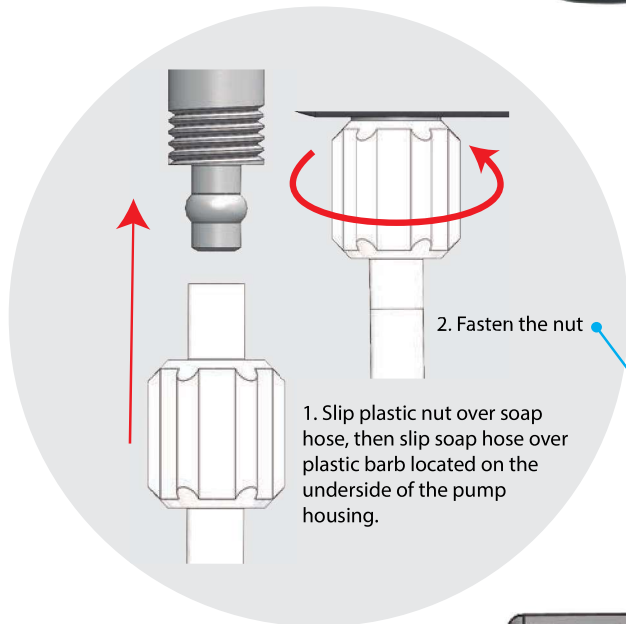
Before proceeding to step 8 make sure wall socket has power **OTHERWISE** soap dispenser will not function

Soap dispensers with **optional AC adapter**: Plug AC adapter into wall socket as usual.

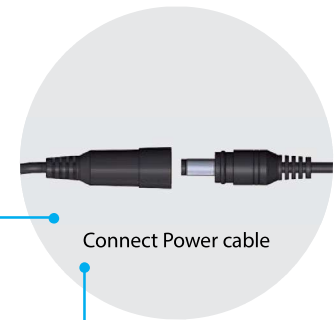
9

Before proceeding to step 9 make sure no objects are present under spout or in front of sensor **OTHERWISE** soap dispenser will not function properly

Connect sensor plug, Power cable, and soap hose to pump housing.

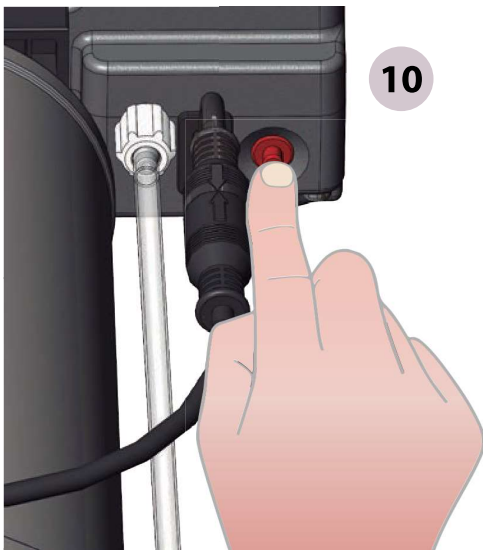


Lineup arrows on sensor plugs and push into place.



Connect Power cable

10



Before proceeding to step 10 make sure soap bottle is filled with liquid soap. See page 6, or page 7 (depending on the type of soap bottle or container used) for soap refill instructions

Press and hold the primer button located on the underside of the pump housing until soap pours out of nozzle

## SOAP REFILL INSTRUCTIONS

**DO NOT USE HEAVY CREAM SOAPS OR GRIT TYPE SOAPS**

It is best to use the same brand of soap every time, and not to let dispenser remain dry for too long

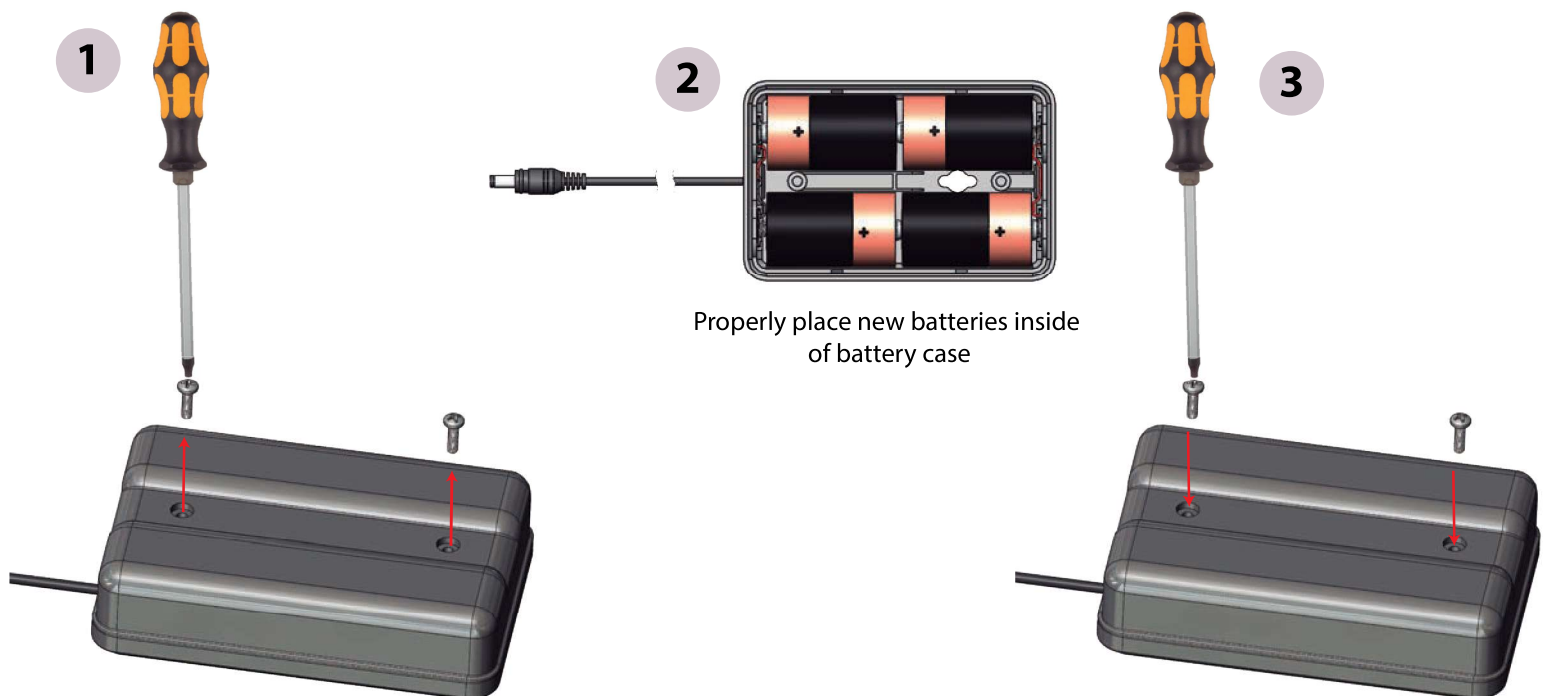


1. Unscrew the empty bottle

2. Add liquid soap into the empty bottle

3. Affix bottle filled with soap onto pump housing. Do not overtighten.

## BATTERY REPLACEMENT INSTRUCTIONS



Unfasten 2 cover screws, and lift cover up and away from batteries

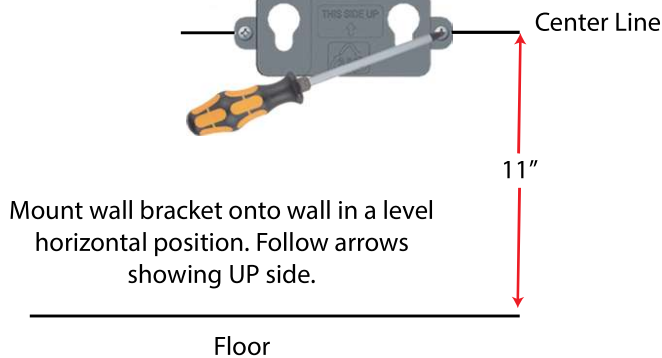
Place cover back onto battery case and fasten 2 cover screws

# GALLON CONTAINER INSTALLATION

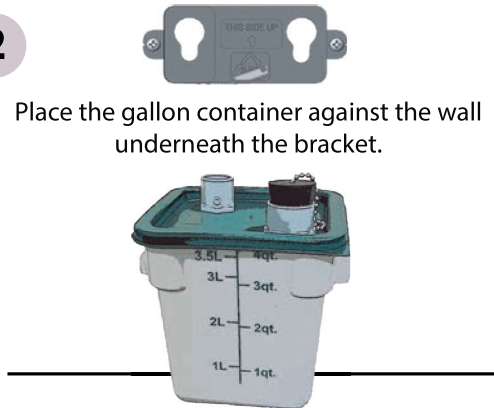
NOTE : CONTINUE FROM STEP 2, PAGE 3 OF THE MANUAL INSTALLATION

GALLON CONTAINER MUST BE PLACED ON LEVEL SURFACE CAPABLE OF SUPPORTING 10LB WEIGHT OR GREATER.

1

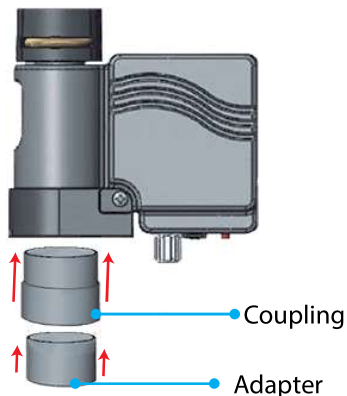


2



3

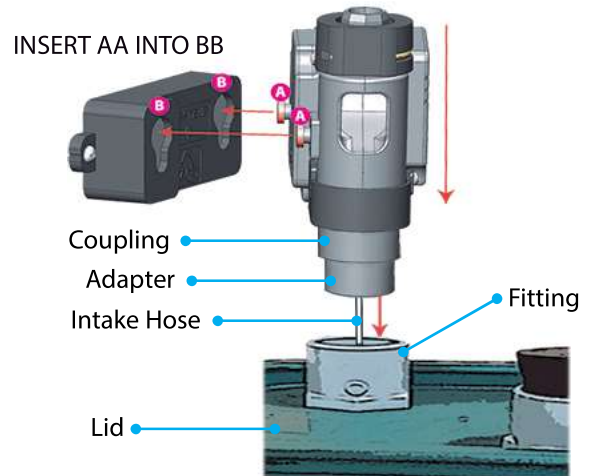
Insert the smaller diameter of the coupling into the threaded side of the pump housing, then insert the adapter in the coupling



**NOTE: Coupling and adapter are used only for Gallon Container**

4

Install pump housing onto wall bracket (insert AA into BB and push pump housing down), insert the adapter onto the fitting of the lid at the same time

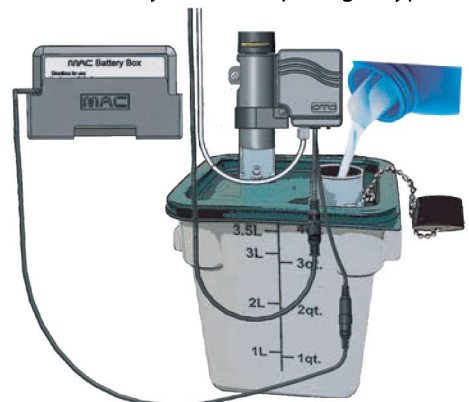
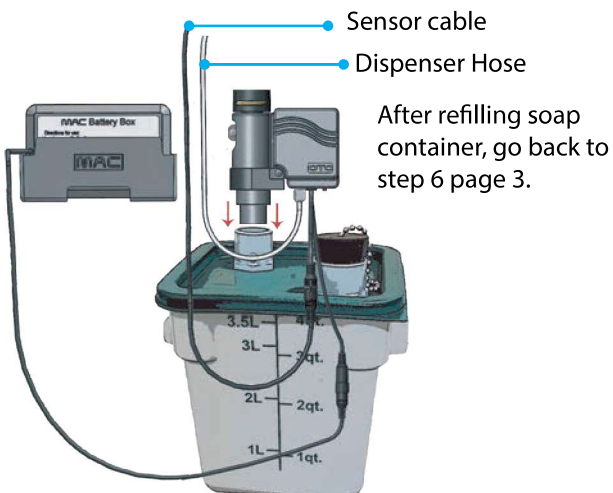


## Refill Instructions

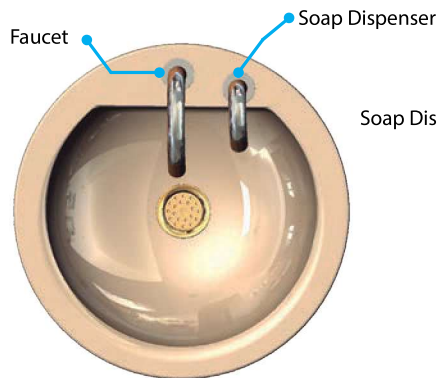
Remove the plug for refill

Put back after refill

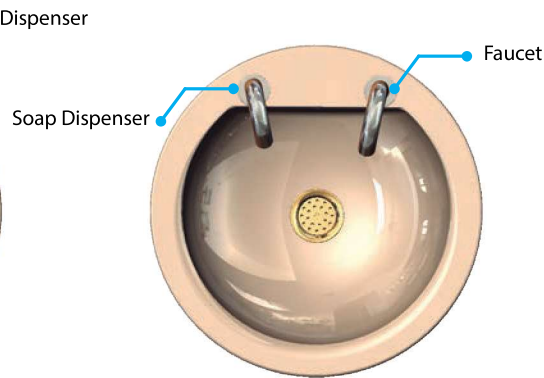
Do not use heavy cream soaps or grit type soaps



## Installation Option A



## Installation Option B



### Proper Installation of Soap Dispenser Relative to Faucet

Electronic soap dispenser as well as faucet SHALL be accessible to all users.

Special consideration must be given to electronic soap dispenser location to prevent accidental activation

## OPTIONAL EQUIPMENT



**A-14381**

1 Gallon Soap Container



**A-19000**

AC Adapter



**A-10420**

Remote Control



**FA444-17**

Matching Electronic Faucet



**FA400-101**

Electronic Faucet



**FA-3260**

Electronic Faucet



**FA43-124**

Electronic Faucet



**FA43-129**

Electronic Faucet

**More Models are Available**

## LIMITED WARRANTY

MAC FAUCETS warrant this product to be free of defects for a period of one year from date of purchase. MAC FAUCETS will replace, free of charge, during this warranty period, parts that prove defective when properly installed and under normal use and service. Damage that occurs as a result of abuse, improper installation, environmental conditions, or improper application will void this warranty. Products or components that have been altered or in any way modified will not be covered under this warranty. This warranty does not cover installation or any other labor charges. This warranty does not cover shipping and handling of both replacement parts and returned defective parts. Defective products must be shipped back to MAC FAUCETS facilities with postage and handling prepaid, along with dated proof of purchase.